



DTC带式传动空调风机

前倾英制叶轮
带式传动

DTC Series
DWDI, Forward Blades
CENTRIFUGAL FAN



广东肇庆德通有限公司
GuangDong zhaoqing DETON Co., Ltd.

2011. 3月版

产品命名方式 Designation of Products



产品特征 Technical specification

- 叶轮: 叶轮采用前弯多翼式设计, 具有效率高、低噪声的特点。叶轮全部用镀锌板冲压而成, 具有使用寿命高的特点。

Wheel: The impeller of DTC have forward curved muti-blades in order to obtain max,efficiency and low noise level. The impeller is manufactured in galvanized steel.
- 机壳: 机壳采用优质热镀锌钢板制成, 侧板采用数控激光切割而成保证高精度的型线。侧板与涡板之间采用碰焊工艺连接。

Scroll: made of high grade galvanized steelsheet, and it is cutted by laser-cutting machine with high quality.
- 框架: 框架采用折边角钢焊接或TOX铆接而成。

Frame: made of galvanized angle sections steel .
- 轴承: 轴承采用优质调心滚珠轴承。

Bearing: out-spherial ball bearing are used in DTC
- 主轴: 主轴采用优质45号钢精加工而成, 确保主轴的尺寸及行位公差。每根主轴都经过防锈处理。

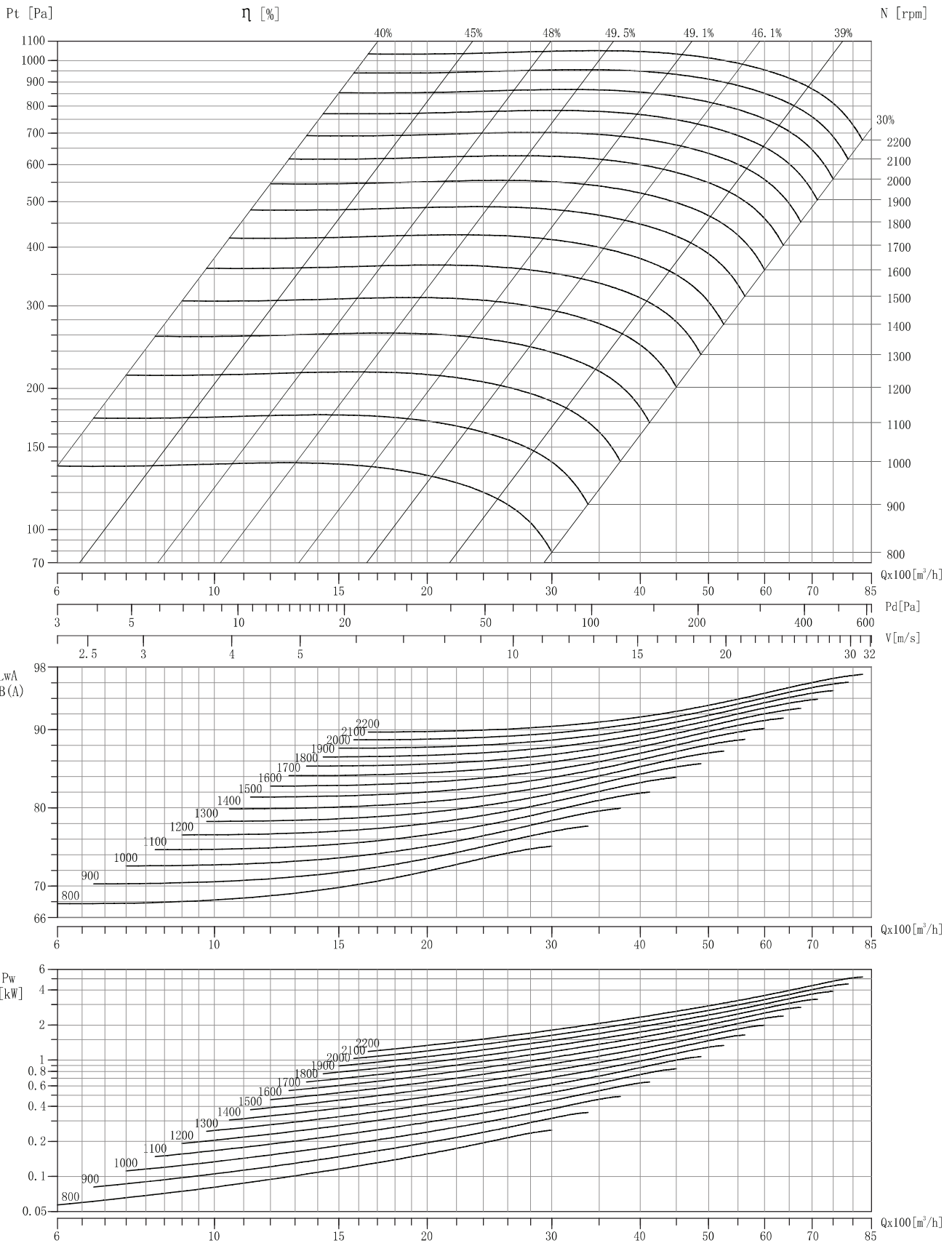
Shaft: the shaft is made of C45 carbon steel with high tolerance levels.shaft is provided corrosion resistance.
- 平衡: 每个叶轮在装配前都经过动平衡, 平衡精度满足ISO1940 和AMCA204 标准中G4.0标准。

Balance: all wheel are statically and dynamically balanced to ISO1940 and AMCA 204-G4.0 standard.



DTC8-8

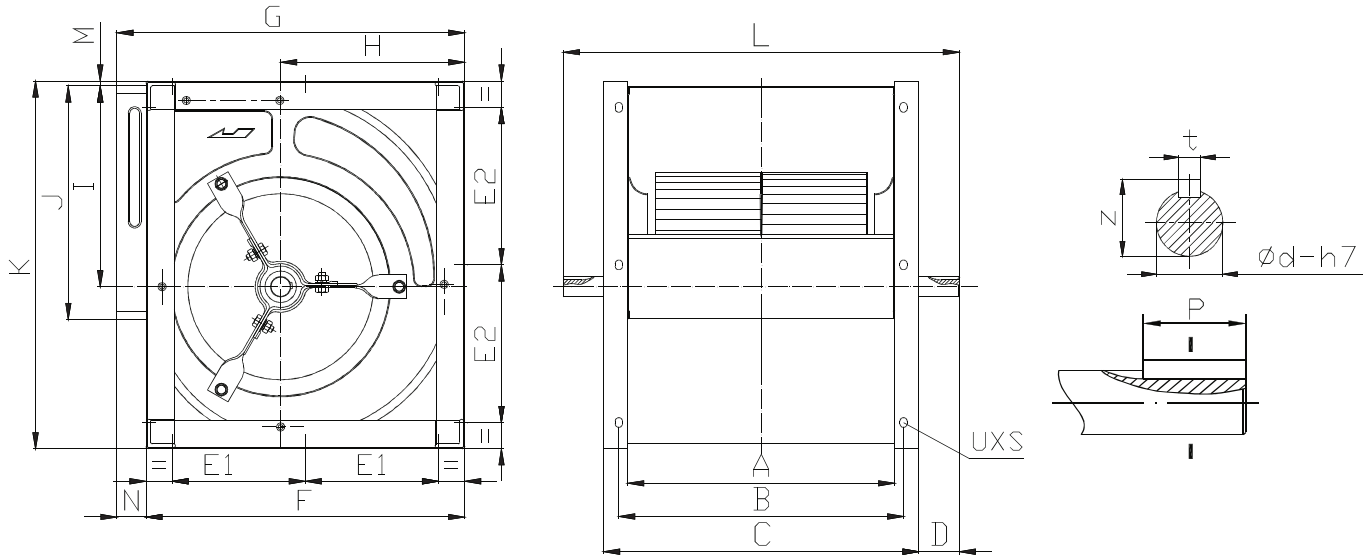
Air Density: 1.2 kg/m³



Performance shown is for installation type B-free inlet, ducted outlet. Performance ratings do not include the effects of appurtenances in the airstream. Power rating does not include drive losses. All performance is in NTP.

DTC Series

DTC-K dimension



[mm]

Model	A	B	C	D	E1	E2	F	G	H	I	J	K	M	N	L	ϕd	t	z	P	UXS
7-7	259	279	299	63	90	90	294	330	178	192	228	336	6	36	425	20	6	22.8	32	9X12
8-8	287	312	337	62	112	112	312	348	184	216	256	370	6	36	460	20	6	22.8	32	9X12
9-7	232	254	292	50	137	162	349	385	200	216	262	399	6	36	392	20	6	22.8	32	9X12
9-9	298	320	358	50												25	8	28.3		
					458	20	6	22.8	32											
																	25	8	28.3	
10-8	265	287	325	50	165	195	395	431	228	249	289	455	6	36	425	25	8	28.3	32	9X12
10-10	331	353	391	50												491	25	8		
12-9	309	339	369	50	185	222	461	497	267	294	341	533	6	36	469	25	8	28.3	32	11X16
12-12	395	425	455	50												555	25	8		
15-11	373	403	433	70	225	266	539	575	311	342	404	621	6	36	573	25	8	28.3	50	11X16
15-15	471	501	531	70												30	8	33.3		
					671	25	8	28.3	50											
																	30	8	33.3	
18-13	430	470	510	80	272	320	654	690	376	415	478	751	6	36	670	25	8	28.3	50	11X16
18-18	557	597	637	80												30	8	33.3		
					797	25	8	28.3	50											
																	30	8	33.3	

说明：所有尺寸允许偏差 ± 4 mm

Note: Overall dimension tolerance arange ± 4 mm .