



DTC带式传动空调风机

前倾英制叶轮
带式传动

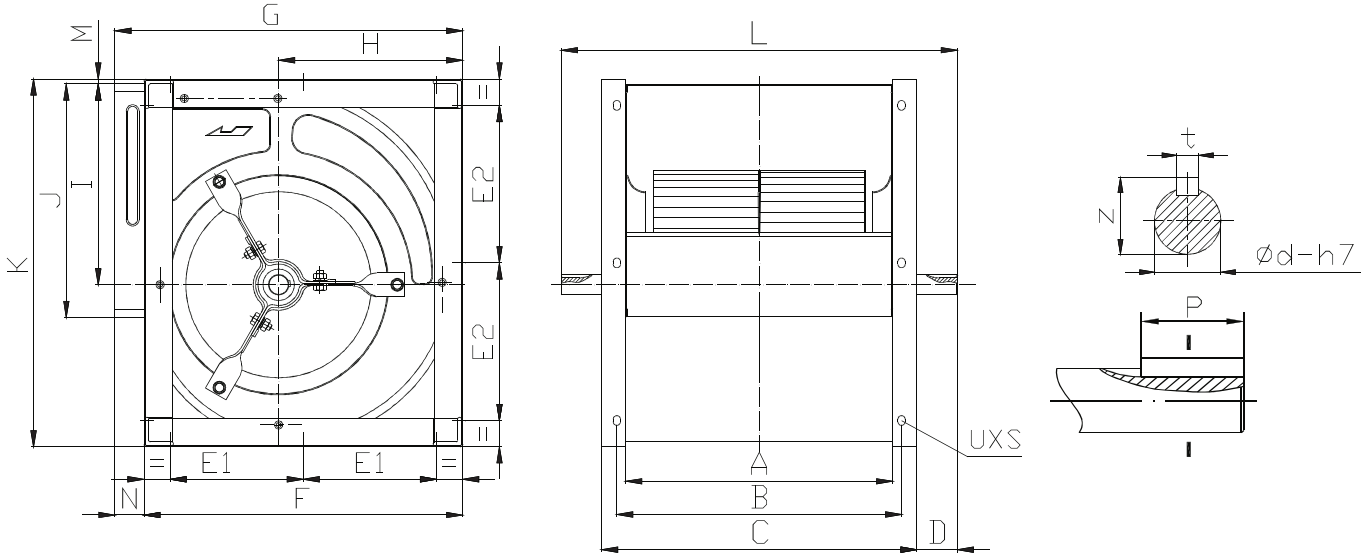
DTC Series
DWDI, Forward Blades
CENTRIFUGAL FAN



广东肇庆德通有限公司
GuangDong zhaqing DETON Co., Ltd.

2011. 3月版

DTC-K dimension



[mm]

Model	A	B	C	D	E1	E2	F	G	H	I	J	K	M	N	L	ϕd	t	z	P	UXS
7-7	259	279	299	63	90	90	294	330	178	192	228	336	6	36	425	20	6	22.8	32	9X12
8-8	287	312	337	62	112	112	312	348	184	216	256	370	6	36	460	20	6	22.8	32	9X12
9-7	232	254	292	50	137	162	349	385	200	216	262	399	6	36	392	20	6	22.8	32	9X12
9-9	298	320	358	50												25	8	28.3		
					458	20	6	22.8	32											
10-8	265	287	325	50		165	195	395		431	228	249	289	455	6	36	425	25	8	
					491				25								8	28.3	32	
10-10	331	353	391	50	185	222	461	497	267	294	341	533	6	36	469	25	8	28.3		32
12-9	309	339	369	50												555	25	8	28.3	
12-12	395	425	455	50	225	266	539	575	311	342	404	621	6	36	573	25	8	28.3	50	11X16
15-11	373	403	433	70												30	8	33.3		
					671	25	8	28.3	50											
15-15	471	501	531	70		30	8	33.3		50										
					670	25	8	28.3	50											
18-13	430	470	510	80	272	320	654	690		376	415	478	751	6	36	797	25	8	28.3	50
									30								8	33.3		
18-18	557	597	637	80	272	320	654	690	376	415	478	751	6	36	797	25	8	28.3	50	
																30	8	33.3		

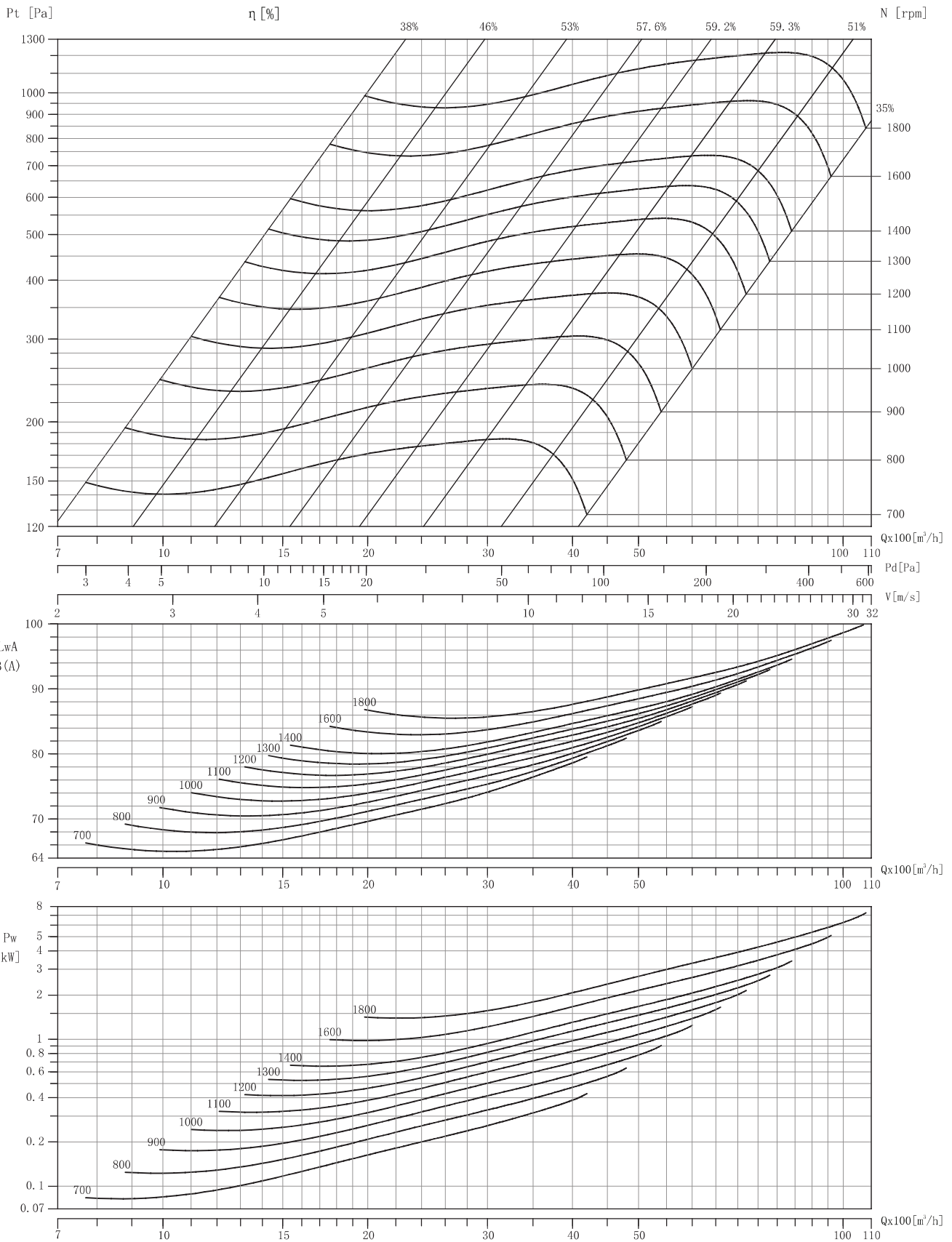
说明：所有尺寸允许偏差 ± 4 mm

Note: Overall dimension tolerance arange ± 4 mm .



DTC10-10

Air Density: 1.2 kg/m³



Performance shown is for installation type B-free inlet, ducted outlet. Performance ratings do not include the effects of appurtenances in the airstream. Power rating does not include drive losses. All performance is in NTP.

DTC Series