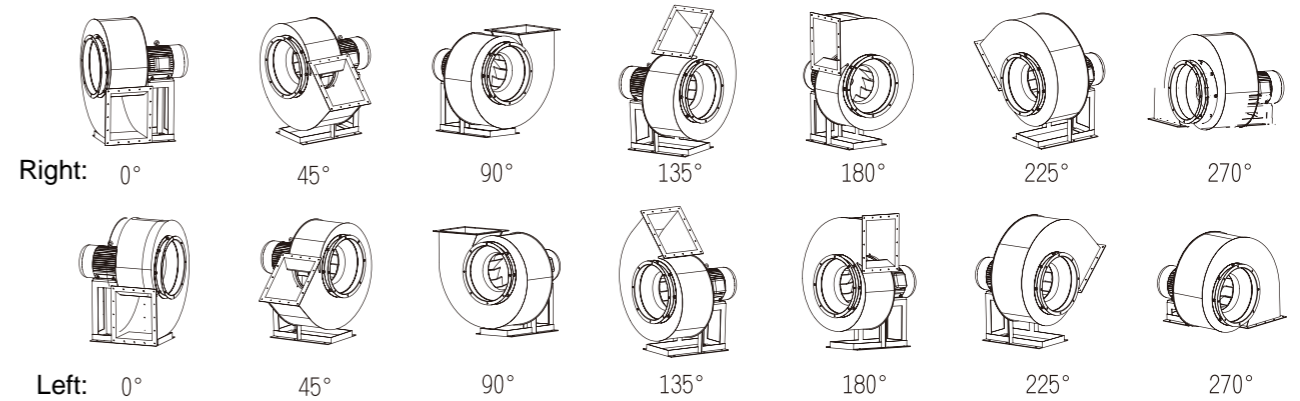




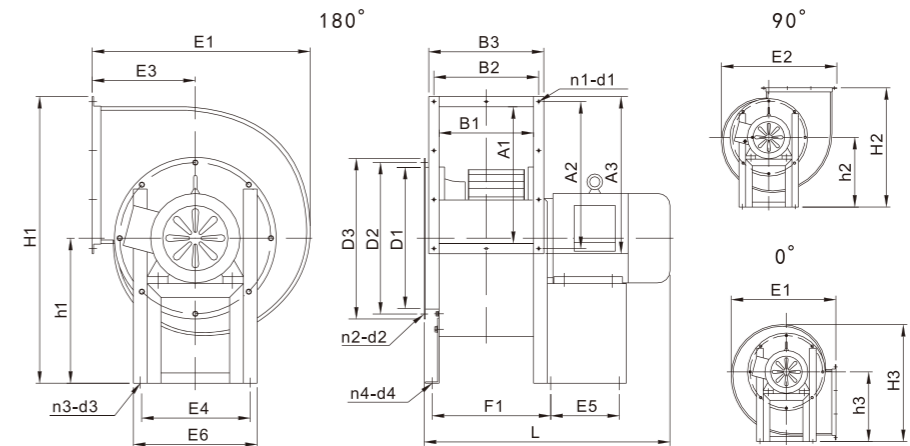
### 11-62- Series Low Noise Centrifugal Fan

- Forward curved multi-blade, single-inlet centrifugal fan by motor direct driven.
- Installation angles: 0°, 90°, 180° can be changeable.
- Suitable for ventilation of industrial and mineral enterprises and hotel, and fume extraction of restaurants.
- Models: 2.5A, 2.8A, 3A, 3.5A, 4A, 4.5A, 5A, total 7 models.
- Air volume: 1160 ~ 15300 m³/h.
- Total pressure: 208 ~ 903 Pa.

### Angles for inlet & outlet

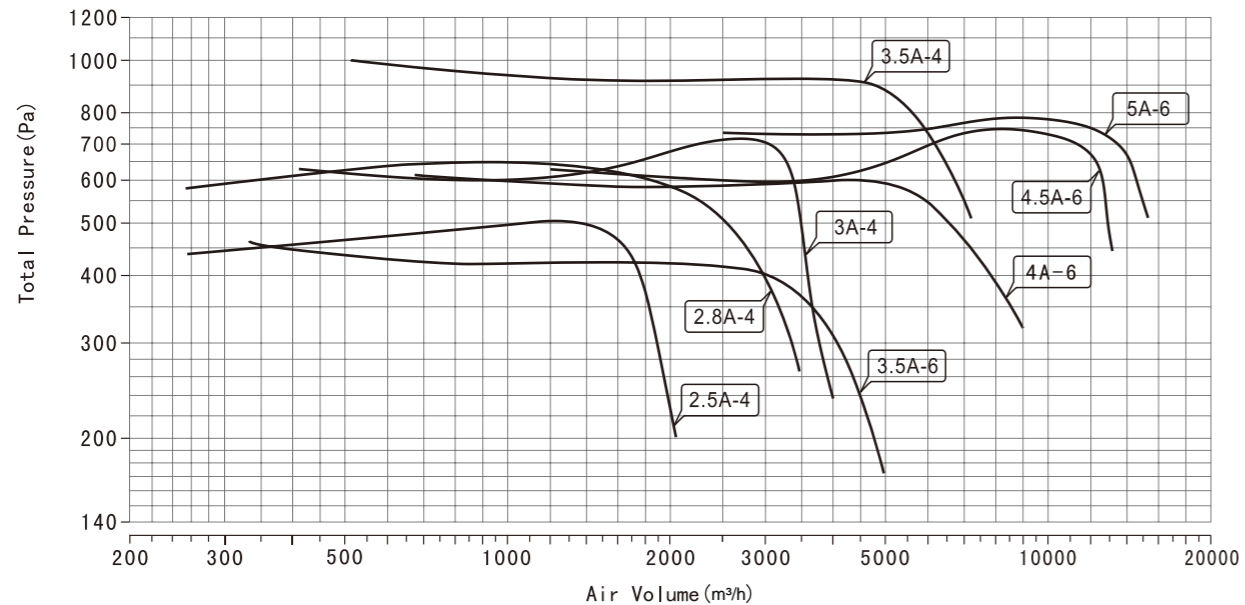


### Dimensions



注: 90°和0°除图中标示出的尺寸外, 其余与180°相同

### 11-62- Performance curve



### Inlet & outlet Dimension

Model	Inlet							Outlet			
	A1	A2	A3	B1	B2	B3	n1-d1	D1	D2	D3	n2-d2
2.5A	216	241	266	180	205	230	8-Φ7	Φ252	Φ280	Φ300	8-Φ10
2.8A	249	274	299	195	220	245	8-Φ7	Φ288	Φ315	Φ340	8-Φ12
3A	314	339	364	220	245	270	10-Φ7	Φ320	Φ350	Φ380	8-Φ12
3.5A	364	394	424	245	275	305	10-Φ7	Φ364	Φ395	Φ420	8-Φ12
4A	398	428	458	275	305	335	10-Φ7	Φ405	Φ440	Φ465	8-Φ12
4.5A	432	462	492	345	375	405	10-Φ7	Φ455	Φ490	Φ520	8-Φ12
5A	519	555	585	312	352	382	10-Φ7	Φ500	Φ540	Φ570	8-Φ12

### Overall Dimensions

Model	Model with pole	Overall Dimensions															
		L	H1	H2	H3	h1	h2	h3	E1	E2	E3	E4	E5	E6	n3-d3	F1	n4-d4
2.5A	0.55kW-4 (1-phase)	472	485	431	418	245	245	245	380	413	186	195	100	225	4-Φ10	/	/
	0.55kW-4 (3-phase)	472	485	431	418	245	245	245	380	413	186	195	100	225	4-Φ10	/	/
2.8A	0.75kW-4 (1-phase)	487	558	491	479	285	285	285	427	467	206	195	100	225	4-Φ10	/	/
	0.75kW-4 (3-phase)	487	558	491	479	285	285	285	427	467	206	195	100	225	4-Φ10	/	/
3A	1.5kW-4 (1-phase / 3-phase)	555	657	574	523	335	335	335	503	552	240	240	150	270	4-Φ13	/	/
	2.2kW-4 (1-phase / 3-phase)	593	657	574	523	335	335	335	503	552	240	240	170	270	4-Φ13	/	/
3.5A	1.1kW-6	577	746	648	636	380	380	380	564	622	268	270	150	300	4-Φ13	317	2-Φ13
	3kW-4	613	746	648	636	380	380	380	564	622	268	270	170	300	4-Φ13	317	2-Φ13
4A	2.2kW-6	667	835	722	708	422	422	422	634	700	300	320	180	360	4-Φ13	347	2-Φ13
	3kW-6	722	835	722	708	422	422	422	634	700	300	320	200	360	4-Φ13	347	2-Φ13
4.5A	4kW-6	832	933	807	809	472	472	472	719	798	355	330	240	370	4-Φ13	417	2-Φ13
	5.5kW-6	812	933	807	809	472	472	472	719	798	355	330	240	370	4-Φ13	417	2-Φ13
5A	5.5kW-6	812	1076	897	907	550	550	550	774	883	347	382	210	432	4-Φ15	411	2-Φ15
	7.5kW-6	868	1076	897	907	550	550	550	774	883	347	382	260	432	4-Φ15	411	2-Φ15

11-62- Performance chart

Model	Speed (r/min)	Air flow (m³/h)	Pt (Pa)	Pst (Pa)	Noise dB(A)	Power (kW)	Voltage (V)	Weight (kg)
2.5A	1420	1160	496	455	< 71	0.55	220V 380V	26
		1850	345	240				
		2060	208	78				
2.8A	1420	2040	590	508	< 72	0.75	220V 380V	29
		2730	473	327				
		3150	348	155				
3A	1420	2500	713	652	< 76	1.5	220V 380V	43
		3000	705	617				
		3400	584	472				
	1420	3700	330	197	< 78	2.2		55
		4000	237	81				
3.5A	910	2970	405	354	< 75	1.1	380V	49
		3690	350	272				
		4610	230	109				
	1450	4630	903	780	< 82	3		62
		5750	777	588				
		7199	509	212				
4A	960	2840	580	549	< 74	2.2	380V	72
		4040	602	540				
		6060	540	400				
	960	6460	504	344	< 78	3		88
		7880	415	177				
4.5A	960	6760	727	631	< 77	4	380V	110
		8130	746	608				
		9930	727	521				
	960	11350	699	430	< 82	5.5		117
		12600	600	269				
5A	960	8500	783	655	< 81	5.5	380V	124
		10400	765	574				
		12800	725	436				
	960	14000	666	320	< 85	7.5		165
		15300	513	100				