



DTC带式传动空调风机

前倾英制叶轮
带式传动

DTC Series
DWDI, Forward Blades
CENTRIFUGAL FAN

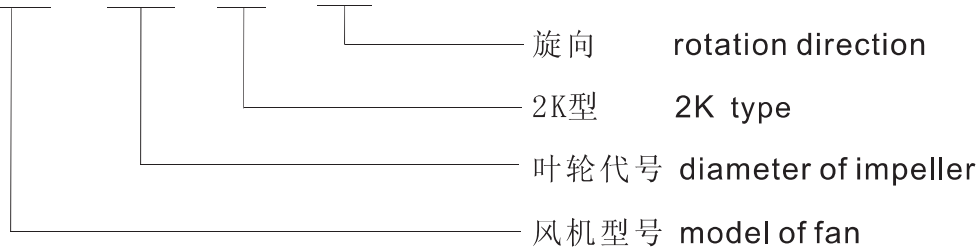


广东肇庆德通有限公司
GuangDong zhaoqing DETON Co., Ltd.

2011. 3月版

产品命名方式 Designation of Products

DTC - 9-7 - 2K - LG



产品特征 Technical specification

■ 叶轮: 叶轮采用前弯多翼式设计, 具有效率高、低噪声的特点。叶轮全部用镀锌板冲压而成, 具有使用寿命高的特点。

Wheel: The impeller of DTC have forward curved muti-blades in order to obtain max,efficiency and low noise level. The impeller is manufactured in galvanized steel.

■ 机壳: 机壳采用优质热镀锌钢板制成, 侧板采用数控激光切割而成保证高精度的型线。侧板与涡板之间采用碰焊工艺连接。

Scroll: made of high grade galvanized steelsheet, and it is cutted by laser-cutting machine with high quality.

■ 框架: 框架采用折边角钢焊接或TOX铆接而成。

Frame: made of galvanized angle sections steel .

■ 轴承: 轴承采用优质调心滚珠轴承。

Bearing: out-spherial ball bearing are used in DTC

■ 主轴: 主轴采用优质45号钢精加工而成, 确保主轴的尺寸及行位公差。每根主轴都经过防锈处理。

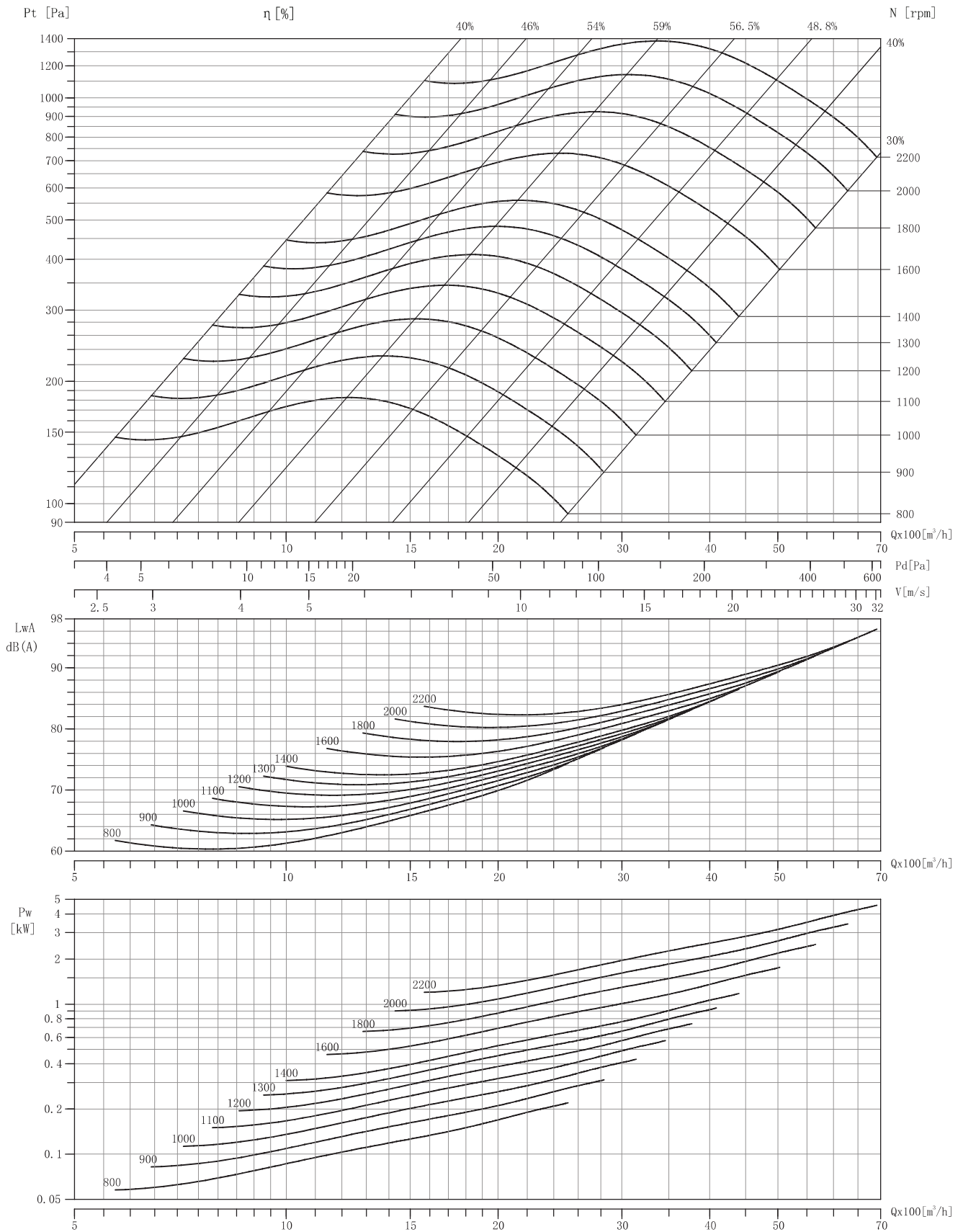
Shaft: the shaft is made of C45 carbon steel with high tolerance levels.shaft is provided corrosion resistance.

■ 平衡: 每个叶轮在装配前都经过动平衡, 平衡精度满足ISO1940 和AMCA204 标准中G4.0标准。

Balance: all wheel are statically and dynamically balanced to ISO1940 and AMCA 204-G4.0 standard.

DTC9-7

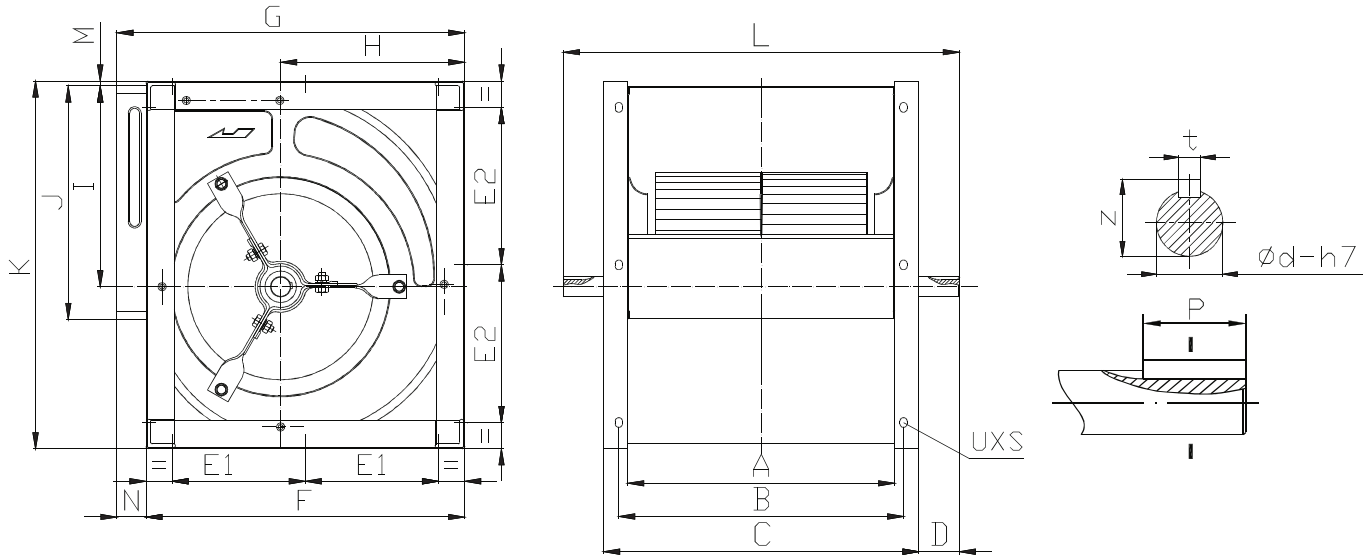
Air Density: 1.2 kg/m³



DTC Series

Performance shown is for installation type B-free inlet, ducted outlet. Performance ratings do not include the effects of appurtenances in the airstream. Power rating does not include drive losses. All performance is in NTP.

DTC-K dimension



[mm]

Model	A	B	C	D	E1	E2	F	G	H	I	J	K	M	N	L	ϕd	t	z	P	UXS
7-7	259	279	299	63	90	90	294	330	178	192	228	336	6	36	425	20	6	22.8	32	9X12
8-8	287	312	337	62	112	112	312	348	184	216	256	370	6	36	460	20	6	22.8	32	9X12
9-7	232	254	292	50	137	162	349	385	200	216	262	399	6	36	392	20	6	22.8	32	9X12
9-9	298	320	358	50												25	8	28.3		
					458	20	6	22.8	32											
																	25	8	28.3	
10-8	265	287	325	50	165	195	395	431	228	249	289	455	6	36	425	25	8	28.3	32	9X12
10-10	331	353	391	50												491	25	8		
12-9	309	339	369	50	185	222	461	497	267	294	341	533	6	36	469	25	8	28.3	32	11X16
12-12	395	425	455	50												555	25	8		
15-11	373	403	433	70	225	266	539	575	311	342	404	621	6	36	573	25	8	28.3	50	11X16
15-15	471	501	531	70												30	8	33.3		
					671	25	8	28.3	50											
																	30	8	33.3	
18-13	430	470	510	80	272	320	654	690	376	415	478	751	6	36	670	25	8	28.3	50	11X16
18-18	557	597	637	80												30	8	33.3		
					797	25	8	28.3	50											
																	30	8	33.3	

说明：所有尺寸允许偏差±4mm

Note: Overall dimension tolerance arange ±4mm .