



DTC带式传动空调风机

前倾英制叶轮
带式传动

DTC Series
DWDI, Forward Blades
CENTRIFUGAL FAN



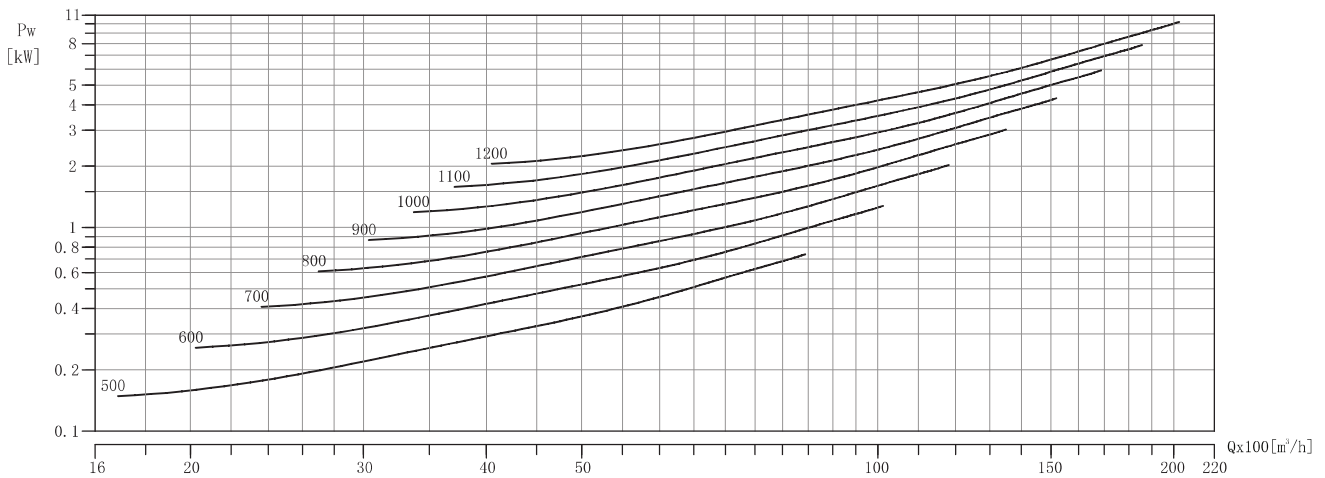
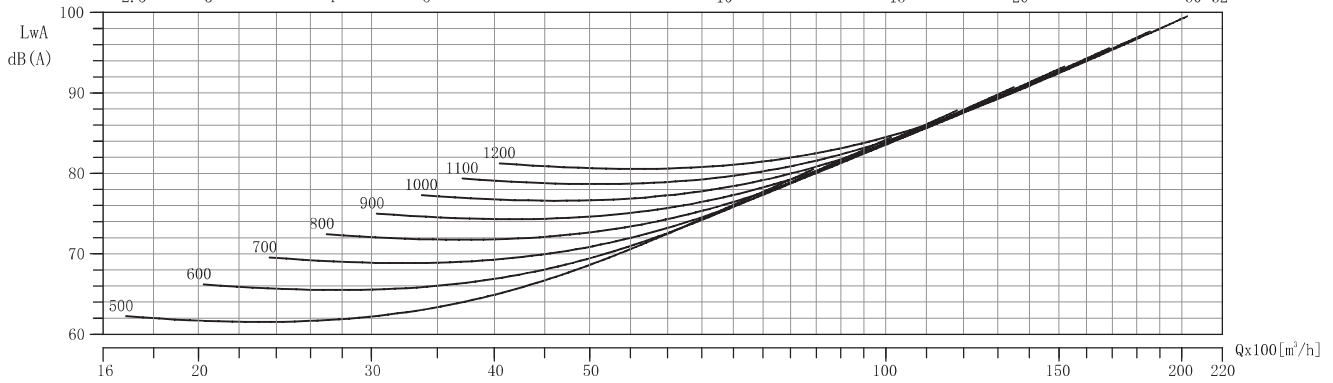
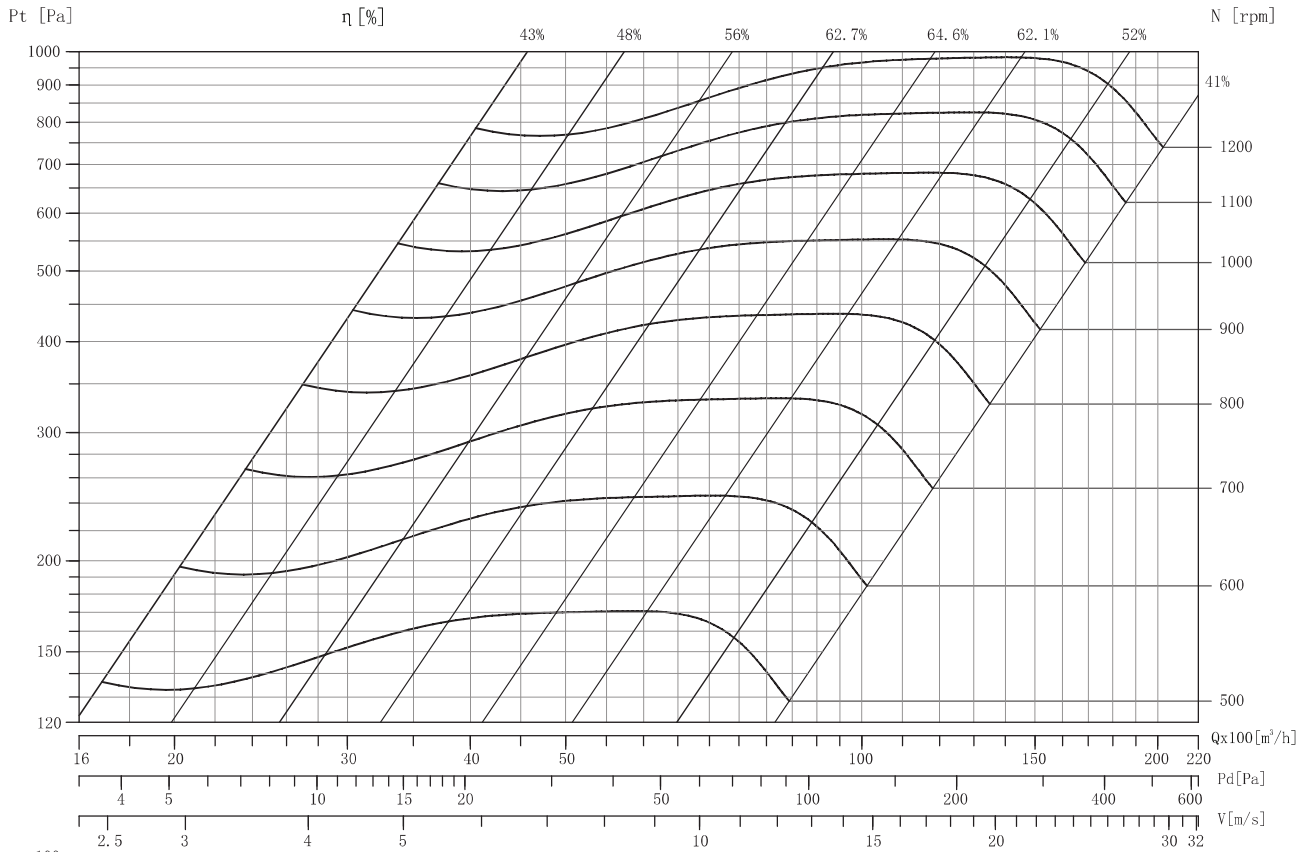
广东肇庆德通有限公司
GuangDong zhaqing DETON Co., Ltd.

2011. 3月版



DTC15-15

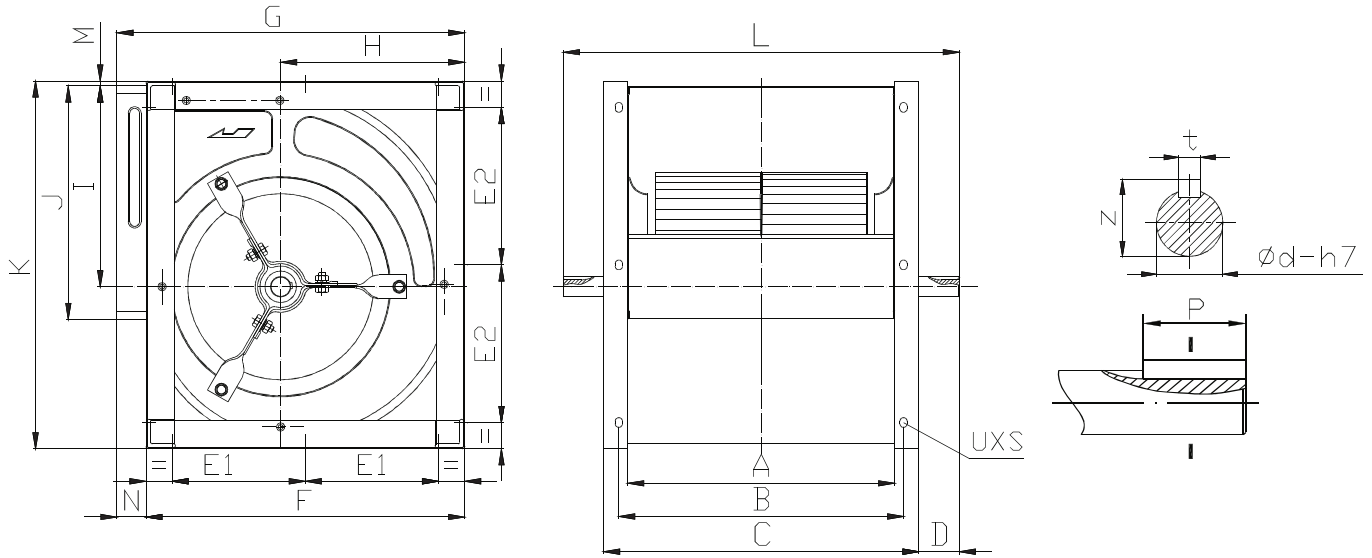
Air Density: 1.2 kg/m³



Performance shown is for installation type B-free inlet, ducted outlet. Performance ratings do not include the effects of appurtenances in the airstream. Power rating does not include drive losses. All performance is in NTP.

DTC Series

DTC-K dimension



[mm]

Model	A	B	C	D	E1	E2	F	G	H	I	J	K	M	N	L	ϕd	t	z	P	UXS
7-7	259	279	299	63	90	90	294	330	178	192	228	336	6	36	425	20	6	22.8	32	9X12
8-8	287	312	337	62	112	112	312	348	184	216	256	370	6	36	460	20	6	22.8	32	9X12
9-7	232	254	292	50	137	162	349	385	200	216	262	399	6	36	392	20	6	22.8	32	9X12
9-9	298	320	358	50												25	8	28.3		
					458	20	6	22.8	32											
																	25	8	28.3	
10-8	265	287	325	50	165	195	395	431	228	249	289	455	6	36	425	25	8	28.3	32	9X12
10-10	331	353	391	50												491	25	8		
12-9	309	339	369	50	185	222	461	497	267	294	341	533	6	36	469	25	8	28.3	32	11X16
12-12	395	425	455	50												555	25	8		
15-11	373	403	433	70	225	266	539	575	311	342	404	621	6	36	573	25	8	28.3	50	11X16
15-15	471	501	531	70												30	8	33.3		
					671	25	8	28.3	50											
																	30	8	33.3	
18-13	430	470	510	80	272	320	654	690	376	415	478	751	6	36	670	25	8	28.3	50	11X16
18-18	557	597	637	80												30	8	33.3		
					797	25	8	28.3	50											
																	30	8	33.3	

说明：所有尺寸允许偏差 ± 4 mm

Note: Overall dimension tolerance arange ± 4 mm .